

Words with /ā/

paid	bakery	weight	remain	escape
raise	brain	delay	break	male
snake	weigh	scale	neighbor	container
complain	holiday	explain	parade	female



weight

Say and Listen

Say each spelling word. Listen for the /ā/ sound you hear in *paid*.

Think and Sort

Look at the letters in each word. Think about how /ā/ is spelled. Spell each word aloud.

How many spelling patterns for /ā/ do you see?

1. Write the **six** spelling words that have the *a-consonant-e* pattern, like *male*.
2. Write the **one** spelling word that has the *a* pattern.
3. Write the **nine** spelling words that have the *ai* or *ay* pattern, like *paid*.
4. Write the **three** spelling words that have the *eigh* pattern, like *weigh*.
5. Write the **one** spelling word that has the *ea* pattern.

1. a-consonant-e Words

_____	_____	_____
_____	_____	_____

2. a Word

3. ai, ay Words

_____	_____	_____
_____	_____	_____
_____	_____	_____

4. eigh Words

_____	_____	_____
-------	-------	-------

5. ea Word

Clues

Write the spelling word for each clue.

1. This is a kind of reptile.
2. People use a scale to do this.
3. This word is the opposite of *fix*.
4. People do this to tell why.
5. This word is the opposite of *leave*.
6. A band might march in one of these.
7. A jar is one kind of this.
8. This word is the opposite of *lower*.
9. People may do this when they don't like something.
10. This is a special day.



Hink Pinks

Hink pinks are pairs of rhyming words that have a funny meaning.

Read each meaning. Write the spelling word that completes each hink pink.

- | | |
|--|--------------|
| 11. a locomotive carrying geniuses | _____ train |
| 12. a hotel worker on pay day | _____ maid |
| 13. a light-colored weighing device | pale _____ |
| 14. something that is very heavy | great _____ |
| 15. a story told by a woman | _____ tale |
| 16. what is used to build a community garden | _____ labor |
| 17. plastic cakes and pies | _____ fakery |
| 18. a story about a man | _____ tale |
| 19. why the employees were paid late | pay _____ |

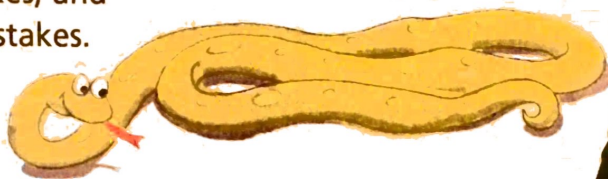


Words with /ā/

paid	brain	scale	parade
raise	weigh	explain	escape
snake	holiday	remain	male
complain	weight	break	container
bakery	delay	neighbor	female

Proofreading

Proofread the journal entry below. Use proofreading marks to correct five spelling mistakes, three capitalization mistakes, and two punctuation mistakes.



Proofreading Marks

- spell correctly
- capitalize
- add period

March 9

I found out today that our nayber, pete, has a pet snake. he named the snake Toby Toby is a mayle garter snake, and he has beautiful stripes on his back. He sleeps in a cage that Pete made out of a wooden apple contayner. He spends the rest of his time watching Pete's pet mice. They look a little nervous to me.

I like Toby, but I hope he will remane at Pete's house He had better not excape and decide to visit my house. having him next door is just fine with me!

Sentences

A sentence begins with a capital letter and ends with a punctuation mark.
A sentence that tells something ends with a period.

I like chicken soup.



A sentence that asks a question ends with a question mark.

Do you like chicken soup?

A sentence that shows strong feeling or surprise ends with an exclamation point.

Don't spill the chicken soup!

The following sentences contain errors in capitalization and punctuation.
Write each sentence correctly.

1. our class planned a holiday vacation

2. mr. Peterson bought fresh bread at the bakery

3. watch out for that snake by your foot

4. what did you do on your break from school

